

The “Silent Messenger II” is a mid-sized message board. This rugged portable changeable message sign is designed to provide communications to improve traffic flow and safety in highway work zones.

The Silent Messenger II consists of a 92” w x 54” h sign panel with a 27 x 48 pixel full matrix LED display on a sturdy steel trailer, powered by a combination of solar panels and batteries. Choose from either a foldable or Lift and Rotate trailer.

OPTIONAL REMOTE COMMUNICATIONS*

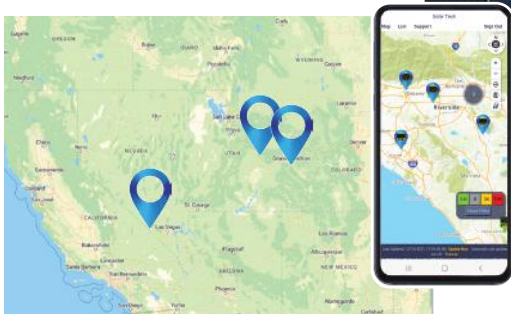
With this option, the Message Board comes with a GPS receiver, cellular transceiver, and free lifetime cellular service*. Use with SolarTech’s Command Center software for remote communications - messages can be changed and managed remotely from a laptop, PC, or a smartphone. No cellular charges!

Command Center software allows you to track your equipment using the built-in cellular transceiver and GPS system.

Manage your fleet from your laptop, PC, or smartphone without leaving your desk! Access units from a map or list. Control units individually or broadcast to a group.

You can build a message library, share messages between boards, schedule messages and more.

Get automated email notifications when a message changes, if the battery voltage is low, if a pixel fails or the unit moves.



No more misplaced equipment... fewer problems... less downtime!



EASY-TO-USE CONTROLLER

Touch-screen controller needs no manual
Includes:

- » Password protection
- » Intuitive icons for ease of use
- » Scheduling capability
- » Fully networkable
- » NTCIP version 3 compatible

Display Panel

Panel Size.....	92" x 54" (234 cm x 137 cm)
Pixel Array/Size.....	27 x 48 pixel array with 1.77" (45 mm) pitch
Character Height.....	12" to 38" (30.5 cm to 97 cm)
Panel Construction.....	All aluminum, modular construction
Panel Face.....	3/16" polycarbonate, non-glare
Number of Fonts.....	Up to Twelve (12)
Graphics Capability.....	Full matrix with full animation
Display Technology.....	LED (amber, 592 nm)
Display Brightness.....	>10,000 candela per square meter
Display Life Expectancy.....	10 years typical
Viewing Angle.....	>60°

Trailer

	Foldable Trailer	Lift & Rotate Trailer
Length Overall (operating)	112" (284 cm)	108" (274 cm)
Length Overall (towing)	112" (284 cm)	152" (386 cm)
Width Overall	92" (234 cm)	77" (196 cm)
Height Traveling	92" (234 cm)	101" (257 cm)
Height Operating	142" (360 cm)	142" (360 cm)
Ground Clearance	13" (33 cm)	13" (33 cm)
Weight of MBII Panel	1,560 lbs (708 kg)	2,000 lbs (907 kg)
Coupler	2" (50 mm) ball or 2.5" (64 mm) pintle ring	2" (50 mm) ball or 3" (76 mm) pintle ring
Lifting Mechanism	1,000 lb automatic brake, winch & cable	1,000 lb electric linear actuator
Axle Suspension	(for both) Torq flex, independent	

Mega-Tech Control Console

Console Circuitry.....	Ultra-low power solid state
Console Touchscreen.....	Weather-resistant, backlit, full-color GUI, intuitive icon-driven, multi-lingual
Programming Software.....	Proprietary, field upgradable for units not connected to Command Center
Message Capacity.....	Pre-programmed and user programmed (> 250 each)
Message Display Time.....	User-selectable (0.1 to 99 seconds)
Display Update Time.....	Instantaneous
Non-volatile Memory.....	16 GB Micro SD card
Password Protection.....	User selectable, multi-level
Operator Interface.....	Easy-to-use icons (no manual required)
Connectivity.....	Supports NTCIP version 3 via UDP/IP over Ethernet, and PMPP over RS-232; Units with Remote Communications Options: UDP/IP over the built-in cellular modem

Energy Source

Operating Voltage.....	12 volts DC (nominal)
Battery Type.....	6 volt heavy duty, deep cycle (GC-2)
Number of Batteries.....	Four (4) standard lead acid (flooded)
Battery Bank Capacity.....	520 amp hours
Battery Status Indicator.....	Displays battery voltage, charging activity and low battery condition
Solar Construction.....	Top-mounted solar panels in aluminum frame
Solar Power Output.....	Standard 160 watt (nominal)
Solar Charge Controller.....	Automatic, temperature compensated, MPPT (Maximum Power Point Tracking)



Upgrades - Lift & Rotate Trailer Only

30 x 48 pixel display panel at 1.77" (45 mm) pixel pitch;
panel dimensions 59.5" x 92"
30 x 56 pixel display panel at 1.77" (45 mm) pixel pitch;
panel dimensions 59.5" x 106"
Tilt and Rotate Solar Arrays: • 160 watt • 220 watt • 330 watt

Remote Communications

Includes GPS receiver, cellular transceiver, and FREE cellular service*.
Remotely access and track your Message Board.

**With this option, cellular service is provided free of charge, and is limited to carrier supported generational wireless technology.*

Battery Upgrades

- Both Trailers

Type	Number	Capacity
Lead-Acid (flooded)	Six(6)	780 amp hour
	Eight (8)	1040 amp hour
Gel Cell or AGM	Four (4)	520 amp hour
	Six(6)	780 amp hour
	Eight (8)	1040 amp hour

Battery Charger Options

- » 45 amp, 120 volt AC
- » 55 amp, 120 volt AC
- » 90 amp, 120 volt AC

Brakes - Both Trailers

- » Hydraulic Surge Brakes
(5,000 lb Capacity)
- » Electric Brakes

Battery Security Option

- » Anti-theft steel battery frame
bolted to trailer
- » Vandal-proof battery box with
reinforced steel cage

Radar Options - Both Trailers

Directional doppler K-Band,
user- configured KPH or MPH
Data collection and statistical
analysis package included.